



PRECISION | SKILLS | INNOVATION





János Csányi  
Owner and CEO

## Dear Reader!

It is my distinguished pleasure to hand over this high quality publication. We have tried to demonstrate all the technologies used in our production with photos.

Over the last years, profound changes have taken place resulting in great achievements, we could therefore say the last 20 years behind a true success story.

Thank you for the trust and support of all of our partners we have been able to grow into a high level company and expand with major steps in our journey started in 1997.

Thank you for all the colleagues of KÁTA CNC who have been working hard to be able to meet this honest trust.

With kind regards,  
János Csányi



# Company

**Our core competence** is metal machining.

Having many years experience in automotive supply - through our TIER1 partners to OEMs such as VOLVO, MERCEDES, PORSCHE, VW, AUDI, BMW - of metal machined components specialized in production of machined aluminium, steel and copper parts made from extruded profiles, bars, and sheets as well as pressed, welded, and assembled parts.

Main partners are CONSTELLIUM, MAHLE, BORG WARNER, EATON, STANDARD-METALLWERKE, CONTITECH, DOMETIC, STADLER, ALDINGER, HALDEX.

Our new technologies are automatic lathes with feeders and high performance laser cut machines.

For sheet metals TRUMPF TRULASER 3030, for bars TRUMPF TRULASER TUBE 7000 laser cut machine are available.



KÁTA  
CNC

PRECISION | SKILLS | INNOVATION





# Headquater (Site Nr.1): Szentlőrinc káta

H-2255 Szentlőrinc káta, Dózsa Gy. Str. 90. 1 hour distance by car from Budapest.





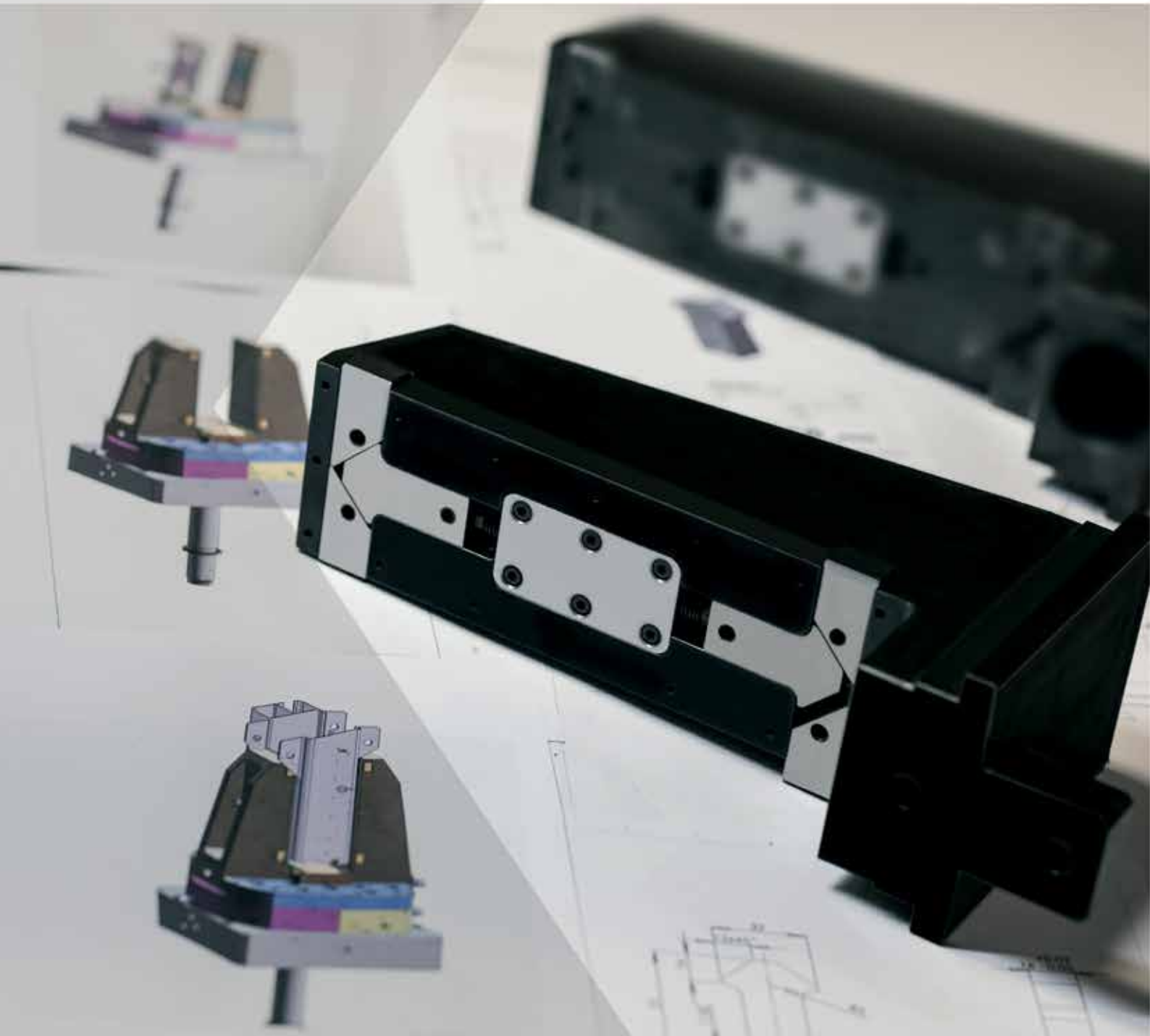
## Site Nr.2.: Jászberény

H-5100 Jászberény, Alsómuszály 58.

# R&D

Individual department at KÁTA CNC

Main activity: design of tools and fixtures, automatization and support for all internal processes

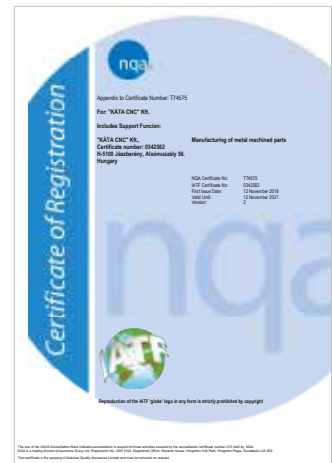


# Quality Control Management / Certifications

KÁTA CNC operates Integrated Quality, Environment, Information Security Management System and certified as:

- IATF 16949 : 2016
- BS/MSZ EN ISO 9001 : 2015
- MSZ EN ISO 14001 : 2015
- MSZ ISO/IEC 27001 : 2014

which Certificates are valid for both Sites.



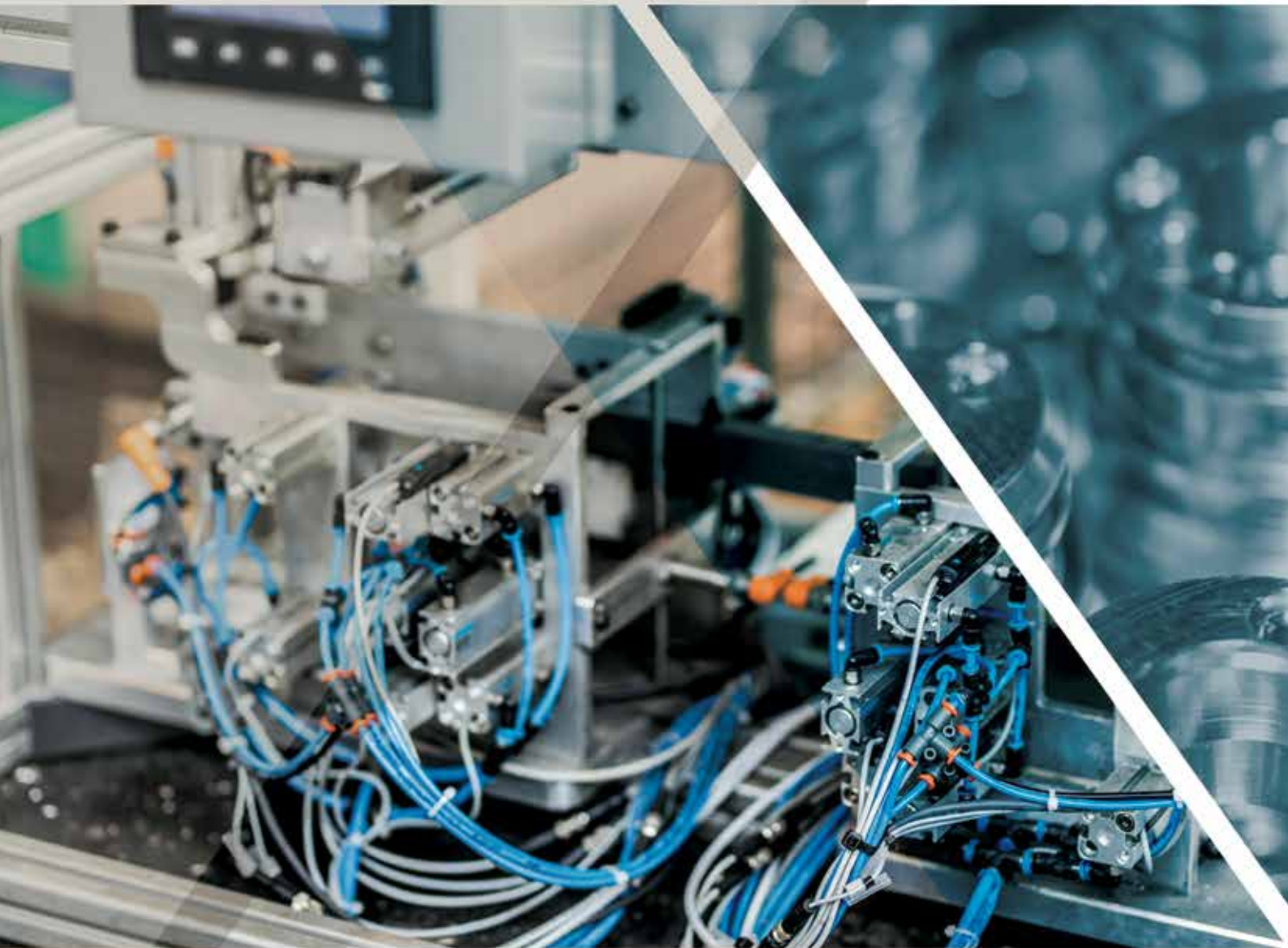
Our company also planning to implement:

- MSZ EN IS 3834-2 : 2006

system certifications.



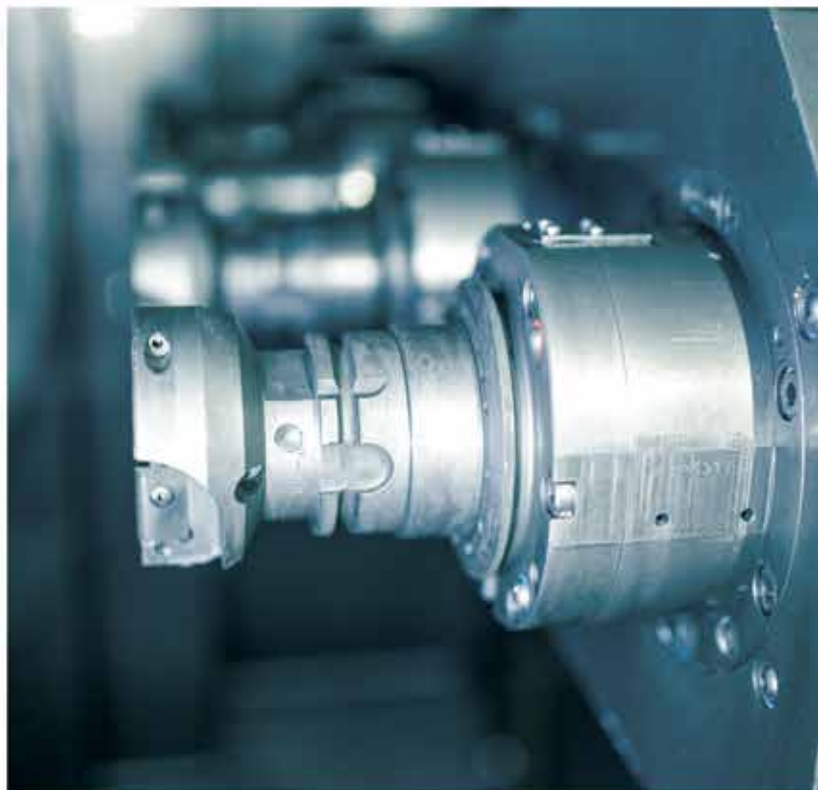






# Technologies

- CNC machining
- Mechanical assembling
- Manual and robotized welding
- Hydraulic cold forming
- Laser technologies
- CNC bending



# Machine Park

## Cutting Machines:

- Kasto Speed M15
- CobraSpeed
- Velox 350AF
- Eisele Pressta
- Elumatec SBZ616 / SAS142



## CNC Work Centres:

### 1 spindle, 3 axis:

- Brother TC-31A  
(X:350mm - Y:250mm - Z:350mm)
- KIA HI-50D  
(X:520mm - Y:450mm - Z:500mm)
- KIA HI-V50D  
(X:520mm - Y:450mm - Z:500mm)
- KIA VX-380TD  
(X:500mm - Y:360mm - Z:350mm)





### 1 spindle, 4 axis:

- Chiron FZ15W  
(X:550mm - Y:400mm - Z:425mm)
- Haas EC-500  
(X:813mm - Y:508mm - Z:711mm)
- Brother TC-32B  
(X:550mm - Y:400mm - Z:415mm)



### 1 spindle, twin 4 axis:

- Haas VF3ss  
(X:1016mm - Y:508mm - Z:635mm)
- Haas VF4ss  
(X:1270mm - Y:508mm - Z:635mm)

### 1 Spindle, 5 axis:

- Haas UMC750  
(X:762mm - Y:508mm - Z:508mm)
- Hermle C300  
(X:650mm - Y:600mm - Z:500mm)
- Hermle C400  
(X:650mm - Y:700mm - Z:500mm)
- Hermle C600  
(X:600mm - Y:450mm - Z:450mm)



## CNC Work Centres:

### 2 spindle, 4 axis:

- Chiron DZ15W  
(X:300mm - Y:400mm - Z:425mm)
- SW BAS03  
(X:300mm - Y:400mm - Z:375mm)
- SW BA322  
(X:300mm - Y:400mm - Z:375mm)
- SW BA400-2  
(X:400mm - Y:500mm - Z:425mm)



### 4 spindle, 4 axis:

- SW BA400-4  
(X:200mm - Y:500mm - Z:425mm)



### 2 spindle, twin 5 axis:

- SW BAS03-5  
(X:300mm - Y:400mm - Z:375mm)



## CNC Lathes:

- Hi-Eco 10  
(Max workable diameter: 180mm)
- Hi-Eco 21HS  
(Max workable diameter: 275mm)



## CNC Long Lathes:

- Star SB-20R  
(Max workable diameter: 24mm)
- Star SR-32JII  
(Max workable diameter: 36mm)



## CNC twin spindle automatic frontlathes:

- MURATA MW80  
(Max workable diameter: 80mm)

## CNC Wire EDM Machine:

- Sodick VL600Q  
(X:600mm - Y:400mm - Z:275mm)





## Robotic Welding Machines:

- Fanuc Arcmate 120iC robot  
(Maximum outreach: 1811mm; max. 20kg)
- Fronius Transpuls Synergic 4000  
(digital, inverter welding machine)

## Laser cutting Machine:

- Trumpf - TruLaser 3030 Fiber (6 kW)  
(workable dimensions : 3000mm x 1500mm;  
max. weight: 900 kg; max workable thickness: steel: 25 mm,  
stainless steel: 25 mm, aluminium: 25 mm, copper: 10 mm)



## Washing Machines:

- Mafac Palma
- Mafac Elba
- Mafac Malta
- Dürr EcoClean
- Special high performance washing machines



## TubeLaser

- TRUMPF TRULASER 7000  
( $\varnothing$ : 254 mm, Maximal lenght of raw material: 6500mm,  
nominal power output: 4kW)



## CNC Bending Machine:

- TRUMPF TRUBEND 5170  
(Compressive force: 1700kN,  
bending lenght: 3230mm)



**Hydraulic, and excenter press machines:** until 425t  
**Engraving, and marking machines:** several types and styles



# Products

---

- **Flanges for automotive climate and hydraulic systems - since 1997**

- High-precision CNC machining centres with 4-5 axis
- Special hydraulic clamping systems
- Special hard metal and PCD machining tools



---

- **Automotive Crash Management System (CMS) components and chassis parts - since 2007**

- CNC machining and special integrated production and assembly lines
- Automatized mechanical assembly of subcomponents and fasteners



---

- **Roll Over Protection Systems (ROPS) component's production and pre assembly for Automotive industry - since 2008**

- Special integrated production and assembly lines
- CNC machining
- Automatized mechanical assembly of subcomponents and fasteners
- Direct deliveries to OEMs





- **CNC turned parts for cooling systems and for automotive industry - since 1999**

- Product transferring with manipulators
- CNC lathes
- Double spindles
- Integrated lines



---

- **CNC machined – die casted and forged - parts for Automotive industry - since 2010**

- High-precision (4-5 axis) CNC machining centres
- Special hydraulic clamping systems
- Special hard metal and PCD machining tools

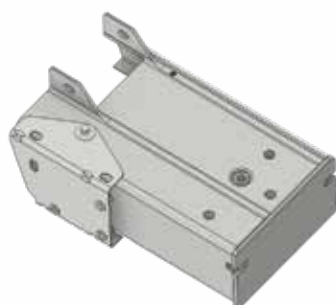






- **(CMS) component's production and pre assembly - since 2015**

- Special integrated automatized production
- 5 axis CNC machining + hydraulic pressing with special machines
- Assembly of subcomponents and fasteners
- VOLVO direct validation
- Direct deliveries to OEMs





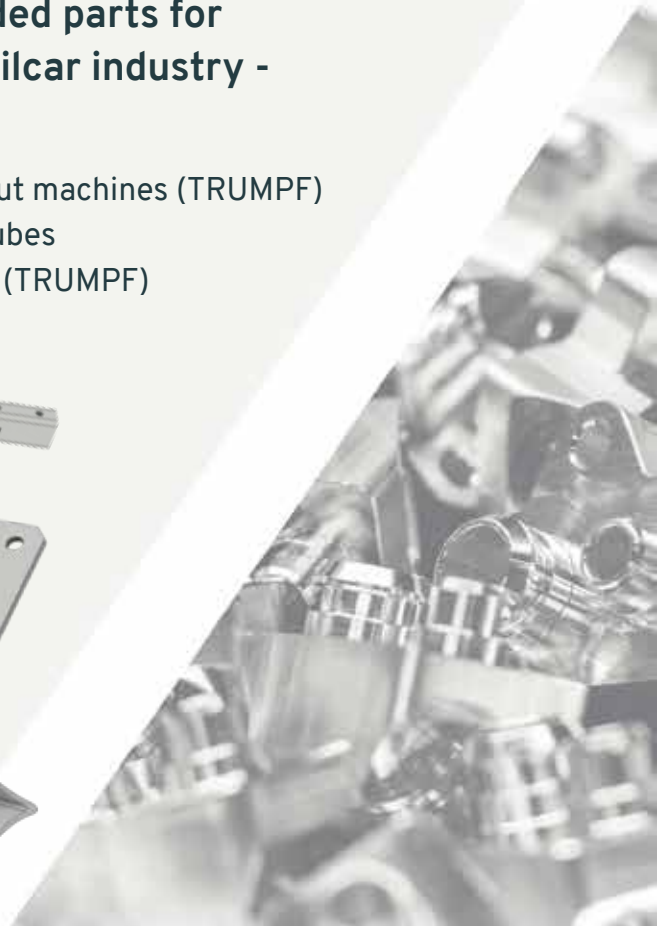
- **CMS) component's production, welding and preassembly - since 2015**

- Special integrated production and assembly lines
- 5 axis CNC machining + hydraulic pressing on special machines
- Robot welding
- Mechanical assembly of subcomponents and fasteners
- VOLVO direct validation
- Direct deliveries to OEMs

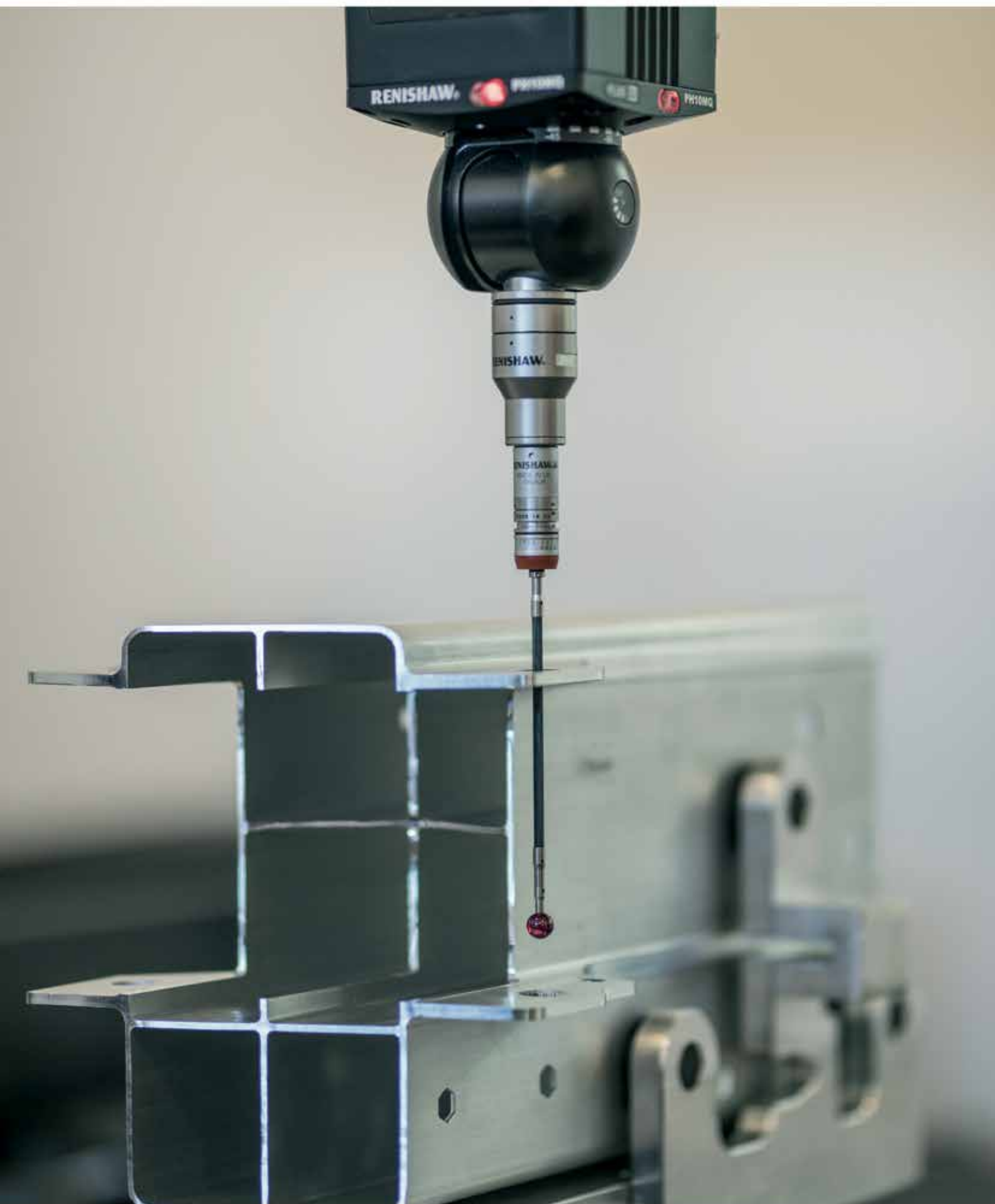


- **Laser cut and bended parts for agricultural and railcar industry - since 2018**

- CNC controlled laser cut machines (TRUMPF) for sheet metals and tubes
- CNC Bending machine (TRUMPF)









## KÁTA CNC

2255 SZENTLŐRINCKÁTA, DÓZSA GY. U. 90.

(+36 29) 631 001 | [INFO@KATACNC.HU](mailto:INFO@KATACNC.HU) | [WWW.KATACNC.HU](http://WWW.KATACNC.HU)